

Upcoming Full Closures for Construction of Bridge B1

Several full closures of Ojibway Parkway Northbound and Southbound between EC Row Expressway and Broadway Blvd will be required for the construction of bridge B1 over Ojibway Parkway. Approximately 3-5 nighttime full closures will be required for the erection of the steel structures within a time span of approximately 2 weeks, beginning in mid-January 2019. Details of the full closure are as follows:

1. Details of all known upcoming lane closures will be on the weekly road reports, which will continue to be distributed weekly to all local emergency service providers and MTO's West Region Traffic Operation Center (TOC).
2. The following Local Emergency Services shall be notified a minimum of 72 hours prior to any full closure:
 - a. Windsor Police Dispatch
 - b. Windsor Police
 - c. LaSalle Police
 - d. OPP Essex, Tecumseh, and Lakeshore Detachments
 - e. Essex-Windsor EMS
 - f. City of Windsor Fire and Rescue Services Headquarters
 - g. LaSalle Fire
 - h. Essex Fire and Rescue Services
 - i. Tecumseh Fire
 - j. WEMG
 - k. WDBA
 - l. DBi
 - m. City of Windsor
3. During full closures of Ojibway Parkway, access shall be maintained at all times for emergency response vehicles via ramps EBR1 and WBR1 (see contract drawings sheets 10 and 11).
4. PVMS and existing VMS signs as shown on contract drawing sheet 12, shall be in place and activated six days prior to the full closure with advance notification messaging as well as advance warning messaging that shall be activated during the full closure.
5. The full closure of Ojibway Parkway will occur at night between the times of 10 PM and 6 AM Monday to Saturday.
6. Full closures will not occur on Sundays or Holidays.
7. All signage will be installed as per contract drawing sheets 10 & 11 and shall meet requirements of OTM Book 7.
8. Police Services shall be employed to perform the full closures.
9. Contractor will monitor the weather prior to scheduled closures and all parties advised of any cancellations or changes ASAP.
10. Closures will be coordinated with WEMG and their maintenance contractor to ensure there are no conflicts.
11. Broadway Blvd and Sandwich Street will remain open during the closure.



West Leg of Ojibway Pkwy which leads to Sandwich Street, remains OPEN in both directions.

LEGEND
BLUE arrows indicated direction of OPEN lanes to traffic.
RED areas CLOSED to traffic.
GREEN areas OPEN to traffic.
YELLOW areas OPEN for Emergency Services.

HWY 401 WB Ramp (WBR2) OPEN to traffic

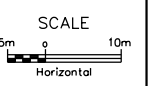
Ojibway Pkwy SB CLOSED

Ojibway Pkwy NB CLOSED

HWY 401 WB ramp (WBR1) access remains OPEN for Emergency Service vehicles during the closure. Ramp can be used in both directions as required and connects to HWY 401 EB ramp (EBR1) seen on sheet 11.

NOTES

1. CONTRACTOR SHALL MAINTAIN ACCESS FOR EMERGENCY VEHICLES VIA RAMP EBR1 AND RAMP WBR1 DURING FULL CLOSURES OF OJIBWAY PARKWAY.
2. CONTRACTOR SHALL PROVIDE TWO WEEKS PRIOR NOTICE OF THE FULL CLOSURE TO THE WEST REGION TRAFFIC SECTION FOR THEM TO ARRANGE TO SHUT OFF PHASE 2.
3. THIS SHEET TO BE APPLIED IN CONJUNCTION WITH SHEET 11 AND SHEET 12.



METRIC

PLATE No
CONT No 2017-3027
GWP No 3028-14-00
FULL CLOSURE OJIBWAY AT
OVERPASS STRUCTURES

SHEET
11

AECOM

Ojibway Pkwy SB
OPEN

Ojibway Pkwy NB
CLOSED

Ojibway Pkwy NB
right and left turn
lanes OPEN

Ojibway Pkwy SB
CLOSED

HWY 401 EB ramp (EBR1) access remains
OPEN for Emergency Service vehicles during
the closure. Ramp can be used in both
directions as required and connects to HWY
401 WB ramp (WBR1) seen on sheet 10.

Broadway Blvd Remains
OPEN to traffic in both
directions.

HWY 401 EB Ramp
(EBR2) OPEN to
traffic

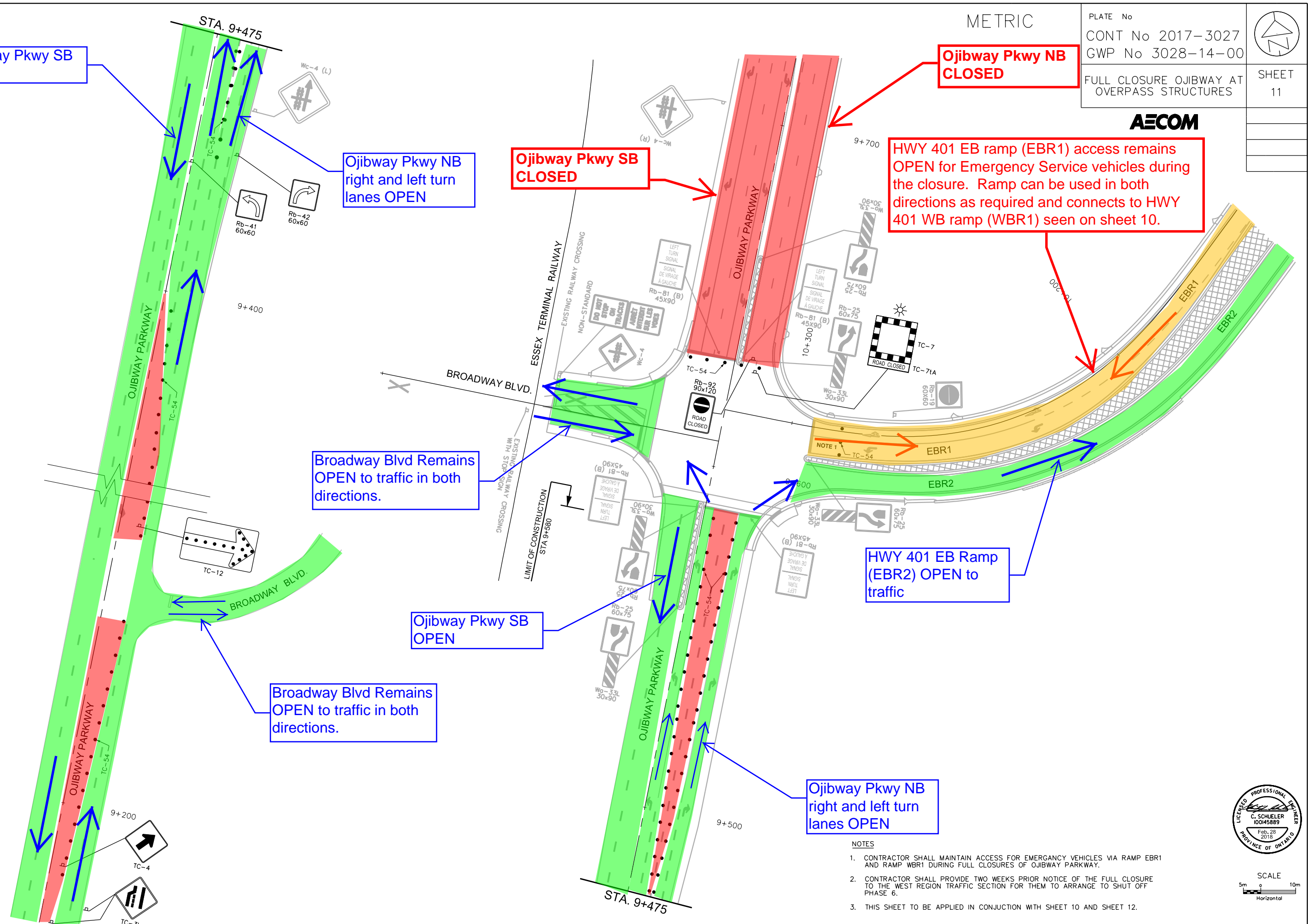
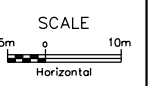
Ojibway Pkwy SB
OPEN

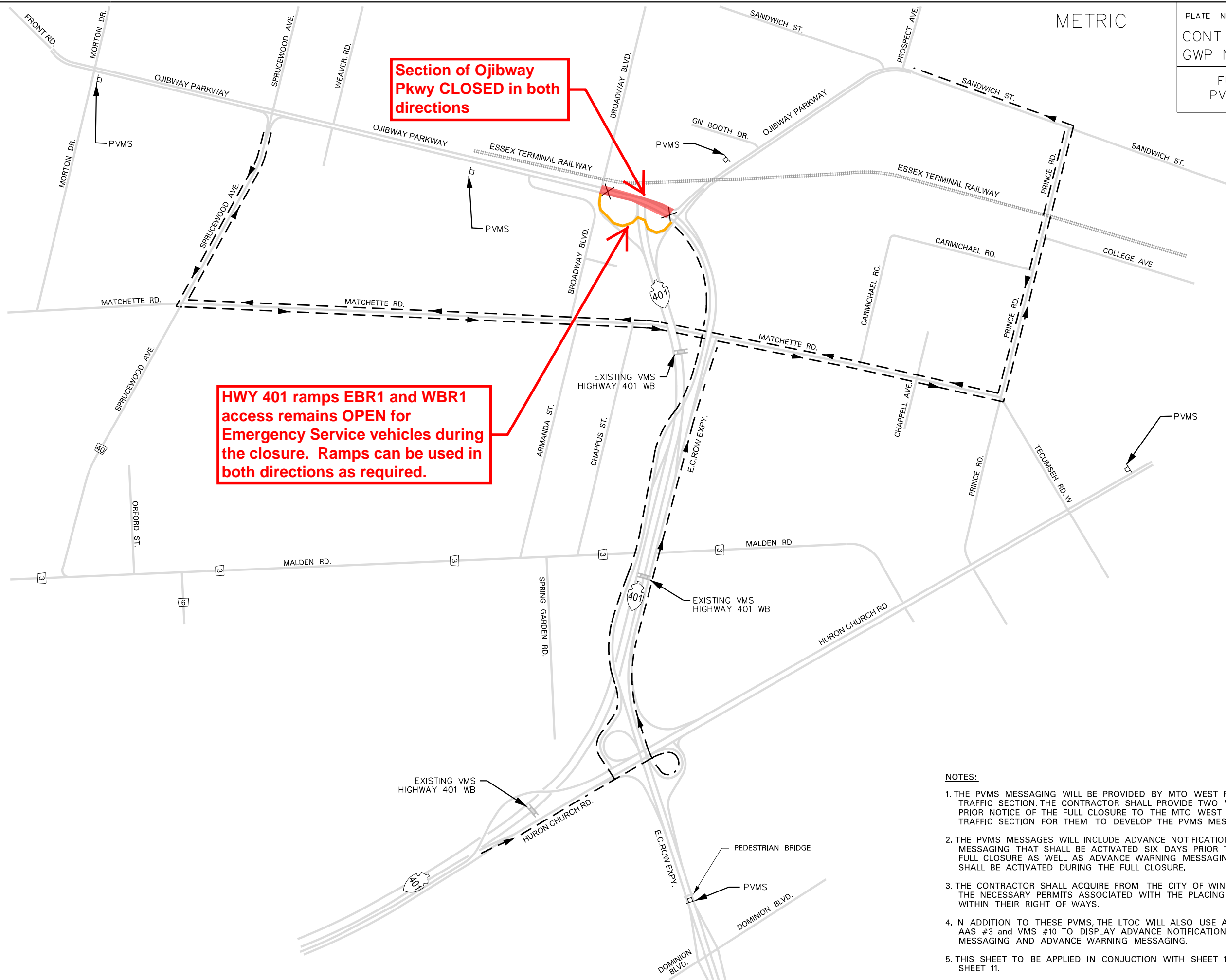
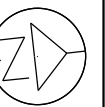
Broadway Blvd Remains
OPEN to traffic in both
directions.

Ojibway Pkwy NB
right and left turn
lanes OPEN

NOTES

- 1. CONTRACTOR SHALL MAINTAIN ACCESS FOR EMERGENCY VEHICLES VIA RAMP EBR1 AND RAMP WBR1 DURING FULL CLOSURES OF OJIBWAY PARKWAY.
- 2. CONTRACTOR SHALL PROVIDE TWO WEEKS PRIOR NOTICE OF THE FULL CLOSURE TO THE WEST REGION TRAFFIC SECTION FOR THEM TO ARRANGE TO SHUT OFF PHASE 6.
- 3. THIS SHEET TO BE APPLIED IN CONJUNCTION WITH SHEET 10 AND SHEET 12.





HWY 401 ramps EBR1 and WBR1 access remains OPEN for Emergency Service vehicles during the closure. Ramps can be used in both directions as required.

Section of Ojibway Pkwy CLOSED in both directions

NOTES:

1. THE PVMS MESSAGING WILL BE PROVIDED BY MTO WEST REGION TRAFFIC SECTION. THE CONTRACTOR SHALL PROVIDE TWO WEEKS PRIOR NOTICE OF THE FULL CLOSURE TO THE MTO WEST REGION TRAFFIC SECTION FOR THEM TO DEVELOP THE PVMS MESSAGES.
2. THE PVMS MESSAGES WILL INCLUDE ADVANCE NOTIFICATION MESSAGING THAT SHALL BE ACTIVATED SIX DAYS PRIOR TO THE FULL CLOSURE AS WELL AS ADVANCE WARNING MESSAGING THAT SHALL BE ACTIVATED DURING THE FULL CLOSURE.
3. THE CONTRACTOR SHALL ACQUIRE FROM THE CITY OF WINDSOR THE NECESSARY PERMITS ASSOCIATED WITH THE PLACING OF PVMS WITHIN THEIR RIGHT OF WAYS.
4. IN ADDITION TO THESE PVMS, THE LTOC WILL ALSO USE AAS #1, AAS #3 and VMS #10 TO DISPLAY ADVANCE NOTIFICATION MESSAGING AND ADVANCE WARNING MESSAGING.
5. THIS SHEET TO BE APPLIED IN CONJUNCTION WITH SHEET 10 AND SHEET 11.

